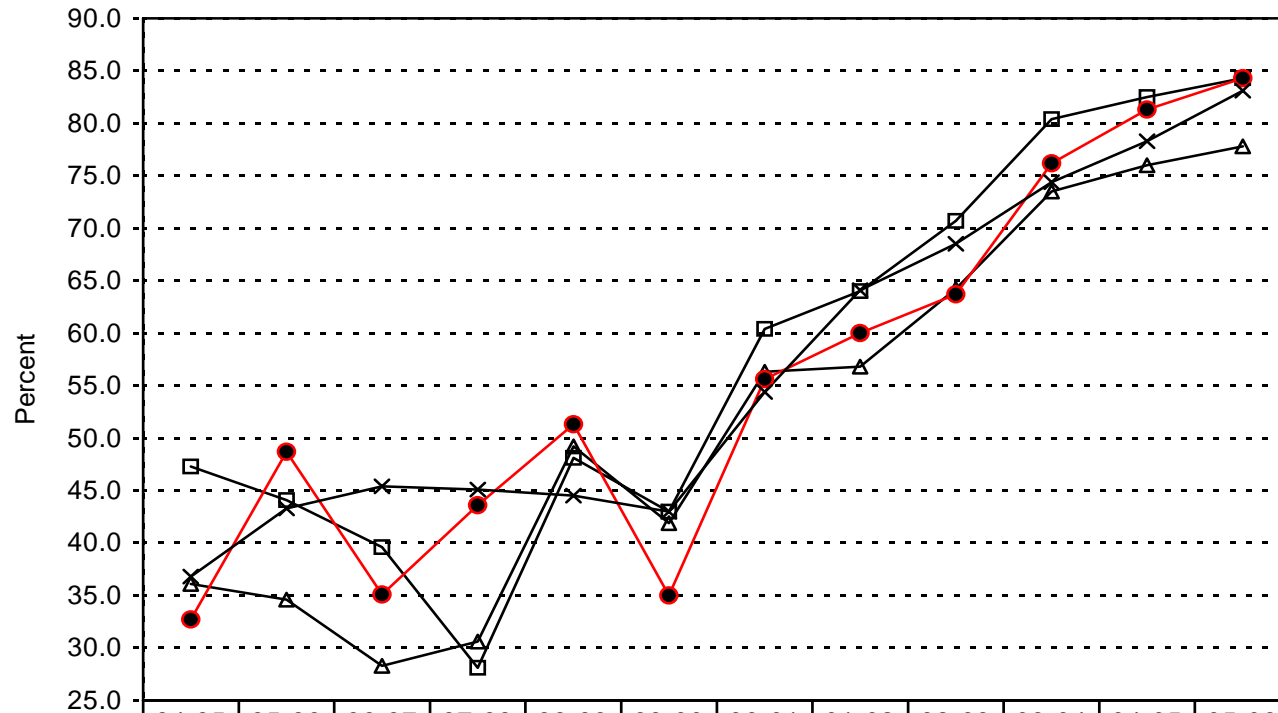


Capital Area Tech Prep Consortium

Percent of Regional Graduates Completing College-Preparatory Plans¹
(Advanced, Recommended, and Distinguished Achievement)



—□— All other students (0, 1)	47.3	44.1	39.6	28.1	48.1	43.0	60.4	64.0	70.7	80.4	82.5	84.3
—△— CT students not tech prep (2)	36.1	34.6	28.3	30.6	49.2	41.9	56.3	56.8	64.2	73.5	76.0	77.8
—●— Tech prep students (3)	32.7	48.7	35.1	43.6	51.3	35.0	55.6	60.0	63.7	76.2	81.3	84.3
—×— Tech prep students (3) - State of Texas	36.8	43.3	45.4	45.1	44.5	43.0	54.4	64.1	68.5	74.4	78.3	83.1

¹ Texas Education Agency, PEIMS